

An aerial, grayscale photograph of the Kansas City skyline. The image shows a dense cluster of skyscrapers in the background, with a mix of commercial and residential buildings in the mid-ground. In the foreground, a large, classical-style building with arched windows and columns is visible, likely the Union Station. A parking lot with several cars and a few trucks is in front of it. A circular fountain with water spraying upwards is in the lower center. The overall scene is a panoramic view of the city from a high vantage point.

KSWLA

Kansas World Language Association

Conference Program

November 5-6, 2010 / Overland Park, KS

Doubletree Corporate Woods Hotel

"Languages make a world of difference!"



Your K-12 World Language Publisher



¡Aventura! • C'est à toi! • Deutsch Aktuell • Zhēn Bàng! • Ecco! • Ima!

Symtalk Spanish, French, German, English & Chinese

Contact your Kansas EMC Representative
LB Wacker • 1-800-227-2411 • Lbwacker@emcp.com

We put digital language learning technology on the map.

When it comes to digital technology for language learning, SANS speaks a universal language. Our Sony Virtuoso™ and Soloist® digital language learning software suite creates an interactive learning environment that engages students in listening, speaking, and cultural exploration. It provides teachers with digital tools for assessment and authentic lesson creation which can positively impact student performance, test scores, and language skills. Put your language learning program on the map by letting us provide a scalable software solution based on your curriculum, level, and budget.

"The lab has given students the opportunity to self-reflect and assess their language skills by listening to their own voices, their peers, and real life access to media and music."

Vincenza Graham
Language Department Chair

Contact Eric Schwartz, your local SANS representative at eschwartz@sansinc.com or (817) 975-4170.

www.sansinc.com

VIRTUOSO
Instructional Control Software
SOLOIST
Digital PC Comparative Recorder



Software
And
Network
Solutions

Exclusive Licensor of Sony
Language Learning Software



2010 Conference Program

Kansas World Language Association

Table of Contents

KSWLA Executive Council	2
President's Welcome	3
KSWLA Calendar	4
Conference Overview	5
Doubletree Hotel / Hall Floor Plan	5
Keynote Presenter	6
Friday-Evening-at-a-Glance	6
Friday Sessions	7
Saturday-at-a-Glance	8
Saturday Sessions	10
Exhibitors	13
Graduate Credit Option	13
2010 KSWLA Award Recipients	14
2010 KSWLA Business Meeting Agenda	16
2009 Business Meeting Minutes	17
2009-2010 Financial Report	18
2011 Conference Preview	19

 **COLLEGE
CREDIT NOW!**



Earn graduate credit for follow-up projects on conference topics!
See p. 13 for more information.

Enrollment form and payment information can be found at the registration table.

You must register and pay ***before leaving the conference*** Saturday, November 6th.

2009-2010 KSWLA EXECUTIVE COUNCIL

<p style="text-align: center;">PRESIDENT (conference chair, ACTFL and CSC delegate)</p>  <p style="text-align: center;">Leah McKeeman Kansas State University 211 Bluemont Hall Manhattan, KS 66506</p> <p style="text-align: center;">(W) 785-532-5512 leahmac@ksu.edu</p>	<p style="text-align: center;">VICE-PRESIDENT (conference program)</p>  <p style="text-align: center;">Mary Smith Gardner-Edgerton 425 N. Waverly Road Gardner, KS 66030</p> <p style="text-align: center;">(W) 913-856-2600 spanishteach76@hotmail.com</p>	<p style="text-align: center;">PAST PRESIDENT (awards, scholarships, grants)</p>  <p style="text-align: center;">Melanie Adams Olathe North High School 600 E. Prairie Road Olathe, Kansas 66061</p> <p style="text-align: center;">(W) 913-780-7140 madamson@olatheschools.com</p>
<p style="text-align: center;">SECRETARY (exhibitors & advertisers)</p>  <p style="text-align: center;">Alyson Kilcoyne Blue Valley West HS 16200 Antioch Road Overland Park, KS 66085</p> <p style="text-align: center;">(W) 913-239-3700 akilcoyne@bluevalleyk12.org</p>	<p style="text-align: center;">TREASURER (accounts)</p>  <p style="text-align: center;">Michele Barbian 609 E. 10th Chanute, KS 66720</p> <p style="text-align: center;">(W) 620-432-2510 Chanute High School mbarbian@gmx.com</p>	<p style="text-align: center;">EXECUTIVE SECRETARY (membership, publications, conference registrar)</p>  <p style="text-align: center;">Ann Gabelmann 1793 E. Highway 18 Lincoln, KS 67455</p> <p style="text-align: center;">(W) 620-562-3596 (FAX) 620-562-3248 Quivira Heights/Wilson Schools agabelmann@kswla.org</p>

FROM THE PRESIDENT

Welcome to the 2010 KSWLA Conference!

On behalf of the KSWLA Executive Council, I welcome you to Overland Park and our annual conference. This is always a wonderful opportunity to see old friends, to meet new colleagues, and to come away with new ideas and techniques to implement within your own classrooms.



If this is your first conference, we extend you a special welcome. We hope that throughout your teaching experience in Kansas, KSWLA will be an integral part of your professional career. For those who are returning, welcome back; it is good to see you again. To those among us who will be presenting a session, thank you for contributing and sharing your knowledge and expertise. I encourage all who attend to take an active role in the conference.

Our keynote speaker, **Greg Duncan**, will discuss how valuable feedback is when motivating students and improving student learning. You will leave with specific strategies to use to provide meaningful feedback. In addition, please be sure to visit our vendors in the atrium to see the latest course materials.

Our business meeting is Saturday morning, at which time we will present our candidate for president-elect. During the luncheon, which is included in your registration fee, we will honor some well-deserving individuals at our awards ceremony.

KSWLA is again working with the University of the Pacific to again make available a **graduate credit option**. Please contact the registration desk for additional information and enrollment forms.

As we focus on the state level, it is good to know that there is encouraging news on the national level regarding foreign language education. This summer Rep. Holt and others introduced the "Excellence and Innovation in Language Learning Act" to ensure reauthorization of the Elementary and Secondary Education Act (ESEA) which includes a focus on globally competent graduates. The current administration has set the goal that by 2020 America will regain its first in the world status by having the highest percentage of college graduates. Our students need not only to graduate college but to do so ready to compete in an ever-increasing global economy.

In closing, I would like to thank the Executive Board for all of their hard work in planning this conference. **Mary Smith**, our vice-president, has skillfully organized some exciting breakout sessions. **Alyson Kilcoyne** has done an outstanding job of contracting vendors for our exhibit area. **Melanie Adams**, past president, has contributed throughout the past year with her wisdom and insight. Thanks to **Michele Barbian** for her work as our treasurer and to **Phyllis Farrar** who serves as our liaison to KSDE. And I'd like to extend appreciation to **Ann Gabelmann**, our executive secretary, and **Chuck Thorpe**, our webmaster, who have done an incredible job this past year. Thanks to all of these people for their support and dedication to KSWLA.

Sincerely,

Leah McKeeman

2010 KSWLA President

KSWLA CALENDAR

2010

National French Week Nov. 4-10

ACTFL Convention Nov. 19-21
Boston, MA

2011

Central States Conference Mar. 3-5
Indianapolis, IN

TESOL Conference Mar. 16-19
New Orleans, LA

KSWLA Deadlines June 1

Mini-Grant proposals

Teacher of the Year nominations

Ermal Garinger scholarship nominations

Loren Alexander Award nomination

Conference Session Proposals

2011 (continued)

AATF Convention July 6-9
Montreal, Canada

AATSP Convention July 6-9
Washington, D.C.

KATG Deutsches Wochenende Sept. (TBA)

German American Day Oct. 6

KSWLA 2011 Nov. 4-5
Wichita, KS



2011 Central States Conference on the Teaching of Foreign Languages

A joint conference with the Indiana Foreign Language Teachers Association



March 3-5, 2011
Hyatt Regency Indianapolis
Indianapolis, IN

2010 KSWLA CONFERENCE OVERVIEW

DOUBLETREE HOTEL - CORPORATE WOODS OVERLAND PARK

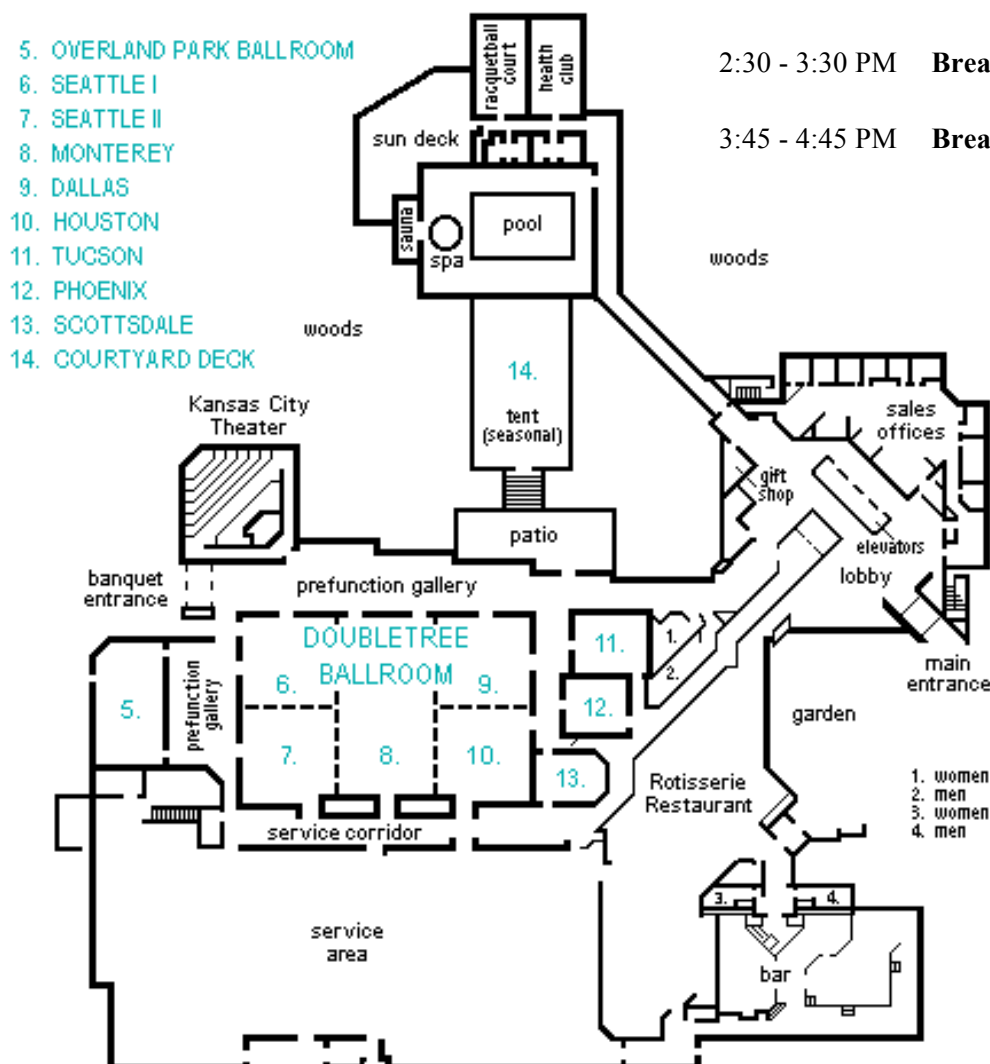
Friday, November 5th

- 4:30 - 5:30 PM **Registration**
- 5:00 - 6:00 PM **Social Mixer & Appetizers***
- 6:00 - 7:00 PM **Breakout Session I**
- 7:00 - 8:30 PM **AAT Meetings**
- 8:30 - 10:30 PM **Film: La Grande Séduction**

Saturday, November 6th

- 7:00 - 7:30 AM **Registration open**
- 7:30 - 8:30 AM **Annual Business Meeting
& Continental Breakfast***
- 8:00 AM - 1:15 PM **Exhibits open**
- 9:00 - 10:15 AM **Keynote Workshop I**
- 10:30 - 11:30 AM **Keynote Workshop II**
- 12:00 - 1:00 PM **Awards Luncheon***
- 1:15 - 2:15 PM **Breakout Session II**
- 2:30 - 3:30 PM **Breakout Session III**
- 3:45 - 4:45 PM **Breakout Session IV**

* Included in your conference registration fees



FRIDAY EVENING, NOVEMBER 5, 2010

	Prefunction Gallery	Overland Park	Phoenix	Tucson	Scottsdale	Monterey
4:30 pm - 5:30 pm	Registration					
5:00 pm - 6:00pm	Exhibits, Social Mixer & Appetizers with Cash Bar					
6:00 pm - 7:00 pm		Click to learn: Using student response to fine tune instruction	Linguafolio in Kansas Schools	Everything you ever wanted to know about student travel Q&A panel	PLC Virtual Book Study Panel	
7:00 pm - 8:30 pm			AATSP (Spanish) Chapter Meeting	AATG (German) Chapter Meeting	AATF (French) Chapter Meeting	
8:30 pm						Film: <i>La Grande Séduction</i>

2010 KEYNOTE WORKSHOP & SPEAKER

"Empowering Students Through Assessment: The Critical Role of Feedback"

No single factor has greater power to improve student learning than 'feedback.' For anyone interested in learning a new skill, feedback on how well it's going is critical. This workshop looks at just how critical feedback can be in foreign language learning, it's potential for producing better — and more motivated — language learners, and specific strategies teachers can use to provide meaningful feedback to their students.



Keynote Presenter

Greg Duncan

For over 30 years, Greg Duncan has been a foreign language educator. Serving first as a high school teacher of Spanish for 12 years and then as a high school administrator for two years, he assumed the position of Coordinator for Foreign Languages and International Education in the Georgia Department of Education for nine years. Among his accomplishments during his tenure of service at the state level was the creation of the Elementary School Foreign Languages Model Program, which has been cited by the Washington-based Center for Applied

Linguistics as a national model. Currently, Greg is owner and President of InterPrep, Inc., a company that provides assistance to schools, school systems and other educational entities in matters related to foreign languages and international education.

FRIDAY, NOVEMBER 5, 2010 / SESSION I (6:00 – 7:00 PM)

Click to Learn: Using student response to fine-tune instruction

Room: **Overland Park**

Presented by: **Lynne Overesch-Maister and Jim Hillen**

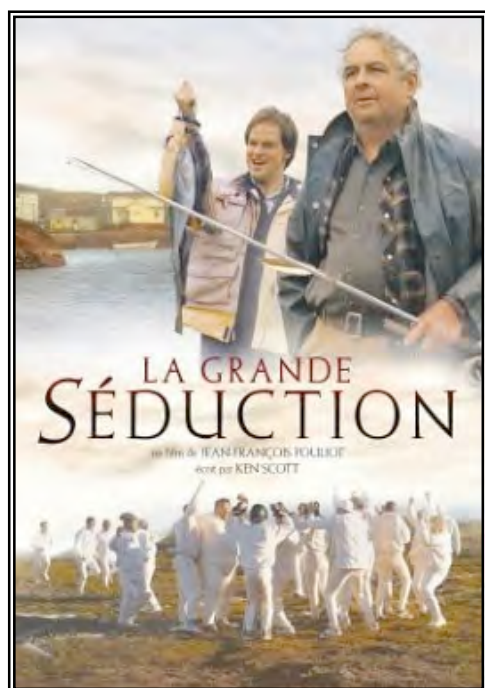
Personal response systems permit immediate assessment of class mastery, allowing teachers to tweak instruction on the fly. Presenters will enlist audience participation in using clicker activities to promote student engagement, diminish the affective filter, and create a sense of community.

Linguafolio in Kansas Schools

Room: **Phoenix**

Presented by: **Phyllis Farrar**

Help your students value what they have learned! Kansas teachers are invited to implement LinguaFolio as a self-assessment and goal-setting tool. Sources for introductory activities and materials will be provided. Several teachers will describe an experience with piloting LinguaFolio in their classrooms.



on the island, but only if a full-time doctor lives in St. Marie. The situation seems hopeless until a young doctor in Montreal has an unfortunate incident with a traffic cop and finds himself on a boat to the faraway village. But how to convince handsome, young, urbane Dr. Lewis to stay in this dreary little spot on the map? As it turns out, the answer lies in just a bit of seductive subterfuge -- along with a tapped phone, a hastily assembled cricket team, and something called Festival de Beef Stroganoff.

Everything you ever wanted to know about student travel

Room: **Tucson**

Presented by: **HS Teacher Panel**

A panel of teachers, who have been there and done that when it comes to student travel, will answer questions about taking students abroad. This will be a question and answer session. Bring your questions.

PLC Virtual Book Study Panel

Room: **Scottsdale**

Presented by: **Dr. Leah McKeeman, Nan Bergen, and Kristine Sieren**

Greg Duncan, our keynote speaker, recommended the book, *Ahead of the Curve: The Power of Assessment to Transform Teaching and Learning*. This session will look at the results of the book study. A panel of teachers who participated will discuss their findings and implementation of the book. Participants will also discuss the next book for our new book study.



**Friday night film: Sundance Film Festival
World Cinema Audience Award Winner**

La Grande Séduction

(Seducing Dr. Lewis)

(French with English Subtitles / Canada, 2004)

St. Marie-La-Mauderne is a tiny fishing village in what some may call the middle of nowhere. For eight years the locals have stood in line for weekly welfare checks, wearing patched sweaters and glum expressions, and remembering the good old days when the catch was good, the fishermen were proud, and life seemed a lot more magical. Then one day, a chance at salvation: a small company wants to build a factory

KANSAS WORLD LANGUAGE ASSOCIATION SATURDAY, NOVEMBER 6, 2010					
	Prefunction Gallery	Seattle 1	Seattle 2	Monterey	Tucson
7:00 am - 7:30 am	Registration				
7:30 am - 8:30 am		Continental Breakfast & Buisness Meeting			
9:00 am - 10:15 am				Keynote Greg Duncan: Empowering Students Through Assessment: The Critical Role of Feedback	
10:15 am - 10:30 am	Break/Time with Vendors				
10:30 am - 11:30 am				Keynote (continued)	
11:30 am - 12:00 pm	Regional Networking/ Time with Vendors				
12:00pm - 1:00 pm		Awards Banquet			
1:15 pm - 2:15 pm					Assessing JCCC Spanish Immersion
2:30 pm - 3:30 pm		Star Talk	Games, Songs, and Chiles		How Healthy Is Your School's World Language Program?
3:30 pm - 3:45 pm	Snack Break				
3:45 pm - 4:45pm		Lingafolio in the Secondary (university)			Spanish for Heritage Learners

KANSAS WORLD LANGUAGE ASSOCIATION SATURDAY, NOVEMBER 6, 2010				
Phoenix	Scottsdale	Overland Park	KC Theater	
				7:00 am - 7:30 am
				7:30 am - 8:30 am
				9:00 am - 10:15 am
Break/Time with Vendors				
				10:30 am - 11:30 am
Regional Networking/ Time with Vendors				
				12:00pm - 1:00 pm
Reading Strategies Above and Beyond "The list" of Questions	Learning Languages with Art	Activities Today - Use 'Em Tomorrow	Get Them Communicating	1:15 pm - 2:15 pm
Exploring West Africa	Start Early: K-12 Pre-AP Activities	French Films in the Classroom	Web 2.0 Part 1	2:30 pm - 3:30 pm
Snack Break				
Don't Let Your Students Grow Up to Be Tourists	Getting More from Your PMS: Coaching Practice for the TPRS Teacher	Top 10 Hispanic Culture Tips for the Spanish Classroom	Web 2.0 Part 2	3:45 pm - 4:45pm

KANSAS WORLD LANGUAGE ASSOCIATION / ANNUAL CONFERENCE

SATURDAY, NOVEMBER 6, 2010

SESSION II 1:15 - 2:15 PM

**Assessing Johnson County Community College's
Inaugural Spanish Immersion Retreat**

Room: **Tucson**

Presented by: **Jim Hillen and Lynne Overesch-
Maister**

Presenters will share their experiences from the JCCC First Spanish Immersion Retreat. Participants will learn the pros and cons of hosting a retreat and its advantages for language teachers.

**Reading Strategies Above and Beyond "The List"
of Questions**

Room: **Phoenix**

Presented by: **Jodi Johnson and Susan Dickerson**

Prepare students to read, engage them in reading, improve comprehension, and critical thinking for better reading proficiency. Presenters will share effective reading strategies and activities for improving comprehension, active participation and discussion.

**Learning Languages with Art / Mit Kunst
Deutsch lernen**

Room: **Scottsdale**

Presented by: **Dr. Elke Lorenz**

Participants will get acquainted with various uses of the visual arts at levels of language learning. This session's focus will be on paintings, photos, illustrations and visual/aesthetic objects/depictions. Presentation is based on information from a weekend workshop organized by the Goethe Institute, Chicago. This session will be presented in English for any language teacher to attend.

**Activities Today- Use 'em Tomorrow! K-12
World Language Classroom Activities**

Room: **Overland Park**

Presented by: **Caroline Chrisco and Cheryl
Loeffler**

Activities, activities and activities! Hear the top 10 activities that have worked in our classes. These activities include all three models of communication. Come to participate and leave with some great new ways of motivating your students to communicate!

Get them Communicating!

Room: **KC Theater**

Presented by: **Heather Martens and Kari Hillen**

Presenters will model various activities that use ACTFL proficiency standards and other research about the use of target language in the classroom. Participants will experience and discuss these activities to use in their own classroom.

SESSION III 2:30 - 3:30 PM

STARTALK C2-Chinese Connect: An Engaging Videoconferencing Program for Teenagers

Room: **Seattle 1**

Presented by: **Sheree Willis**

Presenters will describe experiences in developing and delivering a standards-based, beginning Chinese language videoconferencing program. Presenters will share ideas about teamwork, backward design and integrated performance assessment.

Games, Song, and Chiles: Spice Up Your Spanish Class!

Room: **Seattle 2**

Presented by: **Megan Payne and Sherrie Hoffman**

Learn some NEW games that teach and reinforce communication, vocabulary, and grammar. Add some new songs to your teaching repertoire that are guaranteed to stick in your students' heads for their Spanish-speaking careers. Come prepared to participate and learn something new.

How Healthy is Your School's World Language Program?

Room: **Tucson**

Presented by: **Phyllis Farrar**

You know that thirty-five percent of your high school's students are currently enrolled in languages, but you don't know if that is high or low, compared to other KS districts. A number of your students do quite well, others quit after one year. Is that data useful? This session introduces ways to 'check the temperature' of your language program and set goals.

Exploring West Africa: Spotlight on Senegal A Fulbright-Hays Seminars Abroad Adventure

Room: **Phoenix**

Presented by: **Kristine Sieren**

Kristine Sieren will share her experiences during the month she in Senegal on a Fulbright-Hays Seminars Abroad Program. She will share the grant process, experiences, impressions, what she learned while there, and she will present her curriculum project.

Start Early: K-12 Pre-AP Activities

Room: **Scottsdale**

Presented by: **Marta Silva**

In most districts, AP language courses start too late. The earlier educators facilitate inquiry-based practices, the better prepared students will be to face the actual AP exam, and to develop critical thinking in the target language. In this session, learn some pre-AP strategies that guide students to respond and generate questions, develop ability to engage any text, and document their thoughts.

French Films in the Classroom

Room: **Overland Park**

Presented by: **Nora Kelting and Dr. Merle Mordy**

Presenters will show selected video clips from two French films they have successfully used in the classroom. A discussion will follow of various implemented lesson plans, both original and purchased, which participants will be able to use in their own classroom.

Web 2.0 Part 1

Room: **KC Theater**

Presented by: **Lynne Overesch-Maister and Jim Hillen**

This two-part session will discuss the use of Web 2.0 and its effectiveness in the classroom. The first session will concentrate on tools for listening and speaking. Some websites such as Freecorder, Audacity, and others will be examined.

SESSION IV 3:45 - 4:45 AM

Linguafolio in the Secondary (University)

Room: **Overland Park**

Presented by: **Dr. Edmee Fernandez, Dr. Miguel González-Abellás, Dr. Bert Patrick, and Dr. Evelyn Toft**

A panel of Spanish professors from Fort Hays State University, Pittsburg State University, and Washburn University will discuss their experiences piloting the LINGUAFOLIO Assessment Program in their beginning and intermediate Spanish courses during the academic year 2009-2010.

Spanish for Heritage Language Learners: Lesson 1

Room: **Tucson**

Presented by: **Betzaida Imperiale, Paula Biggar, and Amy Kvasnicka**

This session will profile a teacher's preparation and the teaching of heritage students. Participants will learn how to develop instruction to challenge heritage speakers, foster retention in language programs, and promote a professional level of proficiency.

Teachers, Don't Let Your Students Grow Up to be Tourists or Just say NO to tourism...and say YES to exploring another culture!

Room: **Phoenix**

Presented by: **Sherry Elder and Amy Dick**

ISE will present the benefits of immersion programs, ways of finding support with the school boards and parents, and ideas for fund raising that teachers use to help the students finance their programs. The benefits to the audience include: becoming more confident to create successful programs abroad; finding ways to motivate students to go beyond the

classroom to understand a context for the language they are learning; fundraising ideas; and feedback from teachers who have travelled for many years and who are committed to changing their students' perspective from being a tourist to becoming students of the world, engaged in the target language and culture.

Getting More from your PMS: Coaching Practice for the TPRS Teacher

Room: **Scottsdale**

Presented by: **Lotus Hazlett and Suzanne Sprenkle**

The goal of this session is to get other TPRS teachers together to practice our skills of PQA, brainstorm ideas that have worked, and work through difficulties we, as TPRS teachers, may have come across.

Top 10 Hispanic Culture Tips for the Spanish Classroom

Room: **Overland Park**

Presented by: **Mario Ramos**

Hispanic Culture tips are important to making the Spanish classroom fun but educational at all levels. Participants will engaged in culture that will include visual, written and audio material that can be used in the classroom. **Free Hallmark Spanish greeting cards to the first 50 participants.**

Web 2.0 Part 2

Room: **KC Theater**

Presented by: **Lynne Overesch-Maister and Jim Hillen**

The second session will concentrate on tools for culture and other miscellaneous activities. Some resources such as Wordle, 360 cities, Intel, and others will be examined.



**Graduate Credit Option:
University of the Pacific
"Developing New Ideas in
Education Practicum "
Course ID: P EDU 9008
(1, 2, or 3 credits)**

KSWLA Conference attendees may enroll for one, two, or three credits as follow-up to the conference. These graduate level credits, from the University of the Pacific Center for Professional & Continuing Education, are specifically designed to meet the needs of educators for professional upgrading and salary advancement.

For one credit, the attendee develops and reports on a minimum of three follow-up projects based on conference presentations; for two credits, six projects; and for three credits, nine projects. Reports must be at least one page per project. Coursework is due within four months of the enrollment date, November 6. Teachers may also request extensions of up to a maximum of one full year for unforeseen delays.

An information sheet and enrollment form will be provided at the registration table. The tuition is \$62 per credit by check or by supplying credit card information. **Registration and payment must be completed and turned in at the KSWLA conference registration table by the end of the conference on Saturday, November 6, 2010.**

University of the Pacific is fully accredited by the Western Association of Schools and Colleges. All participants are responsible for determining acceptability of these credits for their use. These courses are letter-graded and appear on a permanent "official" transcript at the University. Copies are available upon request after course completion.

**Only
\$62 per
credit hour!**

EXHIBITORS/ADVERTISERS

Cookie Lee Jewelry
Kendra Rovello
kendracookielee@yahoo.com

EMC Publishing
L.B. Wacker
lbwacker@emcp.com

Holt-McDougal
Kristin May
1900 South Batavia Avenue
Geneva, IL 60134
kristin.may@hmhpub.com

ISE
Tanya Gajewski
11000 West 78th Street
Suite 303
Eden Prairie, MN 55344
tanya@isemn.org

Multimedia Learning Systems
Michael O'Gara
P.O. Box 1971
McKinney, TX 75070
mogara@multimedialearningsystems.com

SANS, Inc./Sony Language Learning Technology
Eric Schwartz
10 White Wood Lane
North Branford, CT 06471
eschwartz@sansinc.com



www.kswla.org



2010 Loren Alexander Award

Jessie Skala

Wichita State University

Jessie Skala was recently selected as the recipient of the **Loren Alexander Award for Pre-Service Teachers**. This award is given annually by the Kansas World Language Association (KSWLA) to an outstanding student currently enrolled in a formal teacher-training program in the state of Kansas. Jessie has a B.A. in Education with an ESOL endorsement and a B.A. in Modern and Classical Languages, with a concentration in Spanish, from **Wichita State University** and represents a pre-service teacher with great promise.

Jessie was nominated by Dr. Marat Sanatulloev at Wichita State. Dr. Sanatulloev wrote that Jessie has been the most organized and reflective teacher candidate that he has ever seen.

Jessie hopes that all of her future students will find the important connections between language and culture. She is currently at **Goddard Middle School** in Goddard, Kansas.

KSWLA is pleased to award Jessie the Loren Alexander Award for Pre-Service Teachers.

Congratulations, Jessie!

2010 Ermal Garinger Scholarship Recipient Annelise Masters Burlington High School

On the recommendation of the Executive Council of KSWLA, **Annelise Masters** is the winner of the **2010 Ermal Garinger Scholarship**. The winner of this award receives \$500. Annelise was nominated by her teacher, Sam Samuelson.

Annelise is currently studying at Kansas State University, Manhattan, to be a speech language pathologist with a minor in Spanish. Annelise wrote that her goal is to help the Spanish-speaking community, and that knowing Spanish has greatly increased her level of confidence.

Congratulations, Annelise!

2010 KSWLA Mini Grant Recipient

Stephanie French

Olathe South High School

Stephanie French from Olathe South High School, Olathe, Kansas, is the recipient of the KSWLA Mini Grant. Stephanie's plan is to create an airplane atmosphere in her classroom so that her students may feel as if they are on their way to Spain.

She wants to buy materials to construct scenery to help the project's ambience. The students will land, and go through customs and passport control, using their Spanish, of course, along the way.

Congratulations, Stephanie!

2009 KSWLA "Best of Kansas"

Diane DeNoon

Olathe South High School

At last year's conference, Diane DeNoon was voted "Best of Kansas" for her session titled "Using Technology to Engage Students in Learning".

As KSWLA's "Best of Kansas", Diane will represent us at the CSC Convention in Indianapolis, IN in March, 2011.

Congratulations, Diane!



**2010 World Language
Teacher of the Year**

Karen Tritt

**Shawnee Mission West High School
Shawnee Mission, Kansas**

Karen Tritt, a foreign language teacher at Shawnee Mission West, was named the 2010 Kansas Teacher of the Year by KSDE officials on Saturday, February 13, 2010, during ceremonies in Wichita. She will be honored at our conference on November 6, 2010 in Overland Park. She was also honored by KSWLA as World Language Teacher of the Year in 2003.

Tritt, who was named the 2010 Kansas Teacher of the Year from a field of eight finalists, has been a foreign language teacher at SM West for the past four years. She has 17 years experience in the classroom and received National Board Certification in World Languages Other than English (WLOTE) in 2003. She was the first in Kansas to be certified for WLOTE and has since mentored three candidates successfully through the process.

In a letter of nomination, Dr. Charles McLean, Shawnee Mission principal, wrote, “Karen is a colleague who, in my professional opinion, emulates effectively engaging teaching skills to meet the needs of ALL students; she possesses the intellectual talent and the genuine caring spirit found in those we respectfully identify as ‘Master’ teachers.”

Tritt said her personal beliefs and feelings about teaching are derived not so much from being an educator as from being a parent.

“Every day I send my child to school hoping that his teachers will treat him with respect and dignity, will know him for the delightfully unique individual he is, will expect the best from him and hold him accountable for his learning, will find ways for him to use his strengths within the classroom, and will give him opportunities to shine in front of his peers,” she explained. “By the same token, each student who walks through my door every day has been entrusted to me by loving parents or guardians who hope for these same qualities in their child’s teachers.”

Tritt said she believes that good teachers are committed to students, highly motivational, and are always learning. Good teachers are reflective, she said, and continually evaluate the strengths and weaknesses of instructional activities.

Congratulations, Karen!



**Kansas World Language Association
Annual Business Meeting/ November 6, 2010**

Presiding: **Leah McKeeman**, President

AGENDA

I. Welcome, Acknowledgements, and Introductory Remarks

II. Minutes of the 2009 Annual Meeting

III. Financial Report 2009-2010

IV. KSWLA Annual Awards

First-Year VIPs:

Bailey Charland, Abilene High School
Rebecca Fleming, Andover High School
Rachel Kelly, Sedan High School
Shelley Marsh, Olathe East High School
Margarita Santiago, SCKESC

Best of Kansas 2009:

Diane DeNoon

Loren Alexander Award:

Jessie Skala, Wichita State University, Wichita, KS

KSWLA Teacher of the Year:

Karen Tritt, Shawnee Mission West High School, Shawnee Mission, KS

V. Recognitions of service and dedication to this organization

Past-President:

Melanie Adams, Olathe North High School, Olathe, KS

VI. Election of new officers

Nominee for the office of President-Elect:

Megan Woods, Wheatridge Middle School, Gardner, KS

VIII. Adjournment

MINUTES
KSWLA Annual Business Meeting
November 7, 2009
Marriott Hotel, Wichita, Kansas

President **Melanie Adams** opened the meeting with a welcome, followed by an introduction of the Executive Council and explanation of their duties.

I. The minutes for the 2008 Annual Meeting were approved.

II. Treasurer's Report

- A.** Michele Barbian reported the income as \$28,809.60 and expenditures as \$17,264.04. The total assets reported as \$37,751.50 for the fiscal year.
- B.** The Financial Report was approved.

III. Ballot Measure - JNCLL

- A.** Ballot measure passes. Membership to JNCL/NCLIS will continue and annual expenses for dues will increase from \$500 to \$1,500.

IV. Recognition of Outgoing Officers

- A.** Past-President Chuck Thorpe, Kansas State University, Manhattan, KS
- B.** Secretary Julie Hughes, Clay Center High School, Clay Center, KS

V. Election of New Officers

- A.** Mary Smith was submitted to the membership as the nominee for Vice President and was approved.
- B.** Alyson Young was submitted to the membership as the nominee for Secretary and was approved.

VI. The meeting was adjourned.



**2010 NOMINEE FOR
KSWLA VICE-PRESIDENT:**

Megan Woods

Megan Woods teaches Spanish to 5th, 6th, 7th and 8th graders at **Wheatridge Middle School** in the **Gardner-Edgerton** School District.

This is Megan's fourth year teaching. Megan graduated from Kansas State University in 2007. She received her Masters of Education in Educational Leadership at MidAmerica Nazarene University in May of 2010, where she completed her thesis on Brain-based Instructional Strategies in relation to the teaching of World Languages.

KANSAS WORLD LANGUAGE ASSOCIATION
Financial Report July 1, 2009 - June 30, 2010

	2009-2010	2008-2009	2007-2008
INCOME			
Bulletin ads	\$200.00	\$320.00	
Conference exhibitors	\$2,300.00	\$1,930.00	\$3,080.30
Conference registrations	\$13,305.00	18,870.00	16,083.00
Conference t-shirts		300.00	
Interest	\$310.27	\$414.60	\$808.99
CSC Grant			
Memberships	\$4,475.00	\$5,885.00	\$5,112.50
Scholarship donations	\$512.50	\$900.00	\$949.50
Promotions and other	\$1,345.19	\$190.00	\$345.00
TOTAL	\$22,447.96	\$28,809.60	\$26,379.29
EXPENSES	2009-2010	2008-2009	2007-2008
<i>Conference location</i>	<i>Wichita</i>	<i>Overland Park</i>	<i>Wichita</i>
ACTFL/JNCL/CSC Membership	\$1,125.00	\$720.00	\$755.00
Bulletin expenses	\$791.13	\$453.34	\$386.28
Conference expenses	\$11,366.65	\$12,528.52	\$11,837.22
Executive Secretary/Webmaster	\$3,250.00	\$750	\$3,000
Office supplies/misc.	\$114.71	\$0.80	\$1,188.55
Postage	\$411.43	\$475.70	\$522.47
Telephone	\$461.34	\$1,114.04	\$1,957.74
Travel	\$1,336.59	\$548.35	\$390.80
Scholarships / Awards / Recognition	\$1,123.00	\$445.72	\$1,200.94
VIP Program		\$127.62	\$480.50
Promotions/Other	\$1,457.14	\$99.95	\$225.80
TOTAL	\$21,436.99	\$17,264.04	\$21,945.30
BOTTOM LINE	2009-2010	2008-2009	2007-2008
CHECKING	\$9,727.23	\$9,021.11	\$6,890.15
SAVINGS	\$6,539.43	\$6,530.40	\$2,514.36
CD	\$22,495.81	\$22,199.99	\$16,801.43
TOTAL	\$38,762.47	\$37,751.50	\$26,205.94
MEMBERS	210	276	280

Books Closed **July 1, 2010**

Submitted for approval, September 26, 2010 Executive Council Meeting
 by **Michele Barbian**, KSWLA Treasurer



KSWLA 2011

Wichita Marriott Hotel

November 4-5, 2011

Keynote Presenter

Lisa Lilley

ACTFL 2009 Teacher of the Year

Lisa Lilley, Central High School (Springfield, MO) Spanish teacher and the Central States Foreign Languages Teacher of the Year, was named the 2009 ACTFL Teacher of the Year at the November annual conference in San Diego, CA.

Lisa Lilley has taught 17 years in her school district. She began her teaching career at Reed Middle School, taught 15 years at Glendale High School, and is currently at Central High School where she serves also as the Curriculum Development Committee Chair for her school district.

Lisa has an M.Ed degree from Drury University and has studied abroad in Spain, Mexico, and Costa Rica. She coordinates study trips to Costa Rica for her students and for other teachers of Spanish. She has been involved in the leadership of the Foreign Language Association of Missouri and the Ozarks Foreign Language Association.

Lisa is a popular presenter at many conferences, having been chosen Best of Missouri in 2005 and a CSC All-Star in 2007.

Tributes: from a colleague: "For Mrs. Lilley, teaching is not a job, but a calling and one which she has accepted with enthusiasm and passion." From a student: "... studying under Sra. Lilley has in many ways greatly changed my life. She encouraged me to fight my hesitations and fears. She is by far the greatest teacher influence I have ever had."

Another student: "... Spanish has become a passion for me, and no other teacher has contributed nearly as much to that passion than Sra. Lilley." And another: "My trip to Costa Rica was the single most empowering event that occurred during my adolescence. ... I cannot imagine my life without Spanish and I owe that to Lisa Lilley."



CALL FOR PRESENTATION PROPOSALS

KSWLA strives to offer its members the best in workshop presenters, such as Myriam Met, Greg Duncan, and Lisa Lilley. At the same time, our conferences are made even more meaningful by the many member presentations given by world language professionals just like you! Share your ideas, expertise, and experience with your fellow KSWLA members in a break-out session at KSWLA 2011 in Wichita.

Use the easy **on-line presentation proposal submission form** found on the KSWLA website. Submission **Deadline**: July 1, 2011.

www.kswla.org



NOTES

This image shows a single sheet of white paper with horizontal ruling lines. The lines are evenly spaced and run across the width of the page. There are no margins, text, or other markings on the paper.

Where are you and your students headed in 2011?



ISE Provides:

Language Immersion
Cultural Immersion
Financial Aid for Students
Family Stay Experiences
Study Materials
Teacher Workshop

Destinations:

China
Costa Rica
Ecuador
France
Germany
Mexico
Panama
Peru
Puerto Rico
Quebec
Spain
Switzerland
U.S. Hosting

Intercultural Student Experiences

A nonprofit educational organization since 1972

129 North Second Street, Suite 102
Minneapolis, MN 55401
1.800.892.0022 | www.isemn.org



HOLT McDUGAL



HOUGHTON MIFFLIN HARCOURT

Helping to build the World Language skills of Kansas' Students

The Holt McDougal Advantage:

- Culture is the Cornerstone
- Robust Technology
- Success for all Learners

**Stop by the Holt McDougal booth
for free samples of Interactive
Student Practice Materials.**



iAvancemos! Komm mit! Bien dit!

For more information, please contact:
Kristin May Kansas Educational Representative
Holt McDougal | Houghton Mifflin Harcourt
kristin.may@hmcphub.com
Office: 913.724.1402

HoltMcDougal.com